





COMPANY



Dino Paoli S.r.l. supplies all the teams participating in F1, GP2, DTM, World Series by Renault, IRL, F. Nippon, V8-Supercar, Indy Light and almost all racing teams in Endurance, GT, F.3000, GRAND AM, ALMS.

Dino Paoli, the strength of a winning idea embodied in a company working in different sectors: motorsport, automotive, and industry.

A craft industry vocation and a long-standing tradition in the production of pneumatic impact wrenches and accessories have led the company to lead the Motorsport sector, making it the ideal partner for several teams, thanks to the high precision and reliability of its products.

Wheel guns to suit all the needs of those who believe in speed, making the pit stop a fundamental element in the outcome of a race.

Quality, technology, innovation and close collaboration with customers are just some of the features that have made Dino Paoli a successful name in the racing world.



**“THE WORLD CLASS IMPACT WRENCHES
MANUFACTURING COMPANY”**

HISTORY

1968

ORIGINS

Dino Paoli S.r.l. was born in 1968 and it has specialized in the production of wheel guns used in workshop for commercial vehicle and standard road cars.

1975

F1 PODIUM

Thanks to the high quality level and offered service, Paoli becomes official supplier to one of the most famous F1 team. This is an important debut that will permit to start a tradition of motorsport.

1994

WORLD CHAMPION

World champion for speed and power. In early 90's Dino Paoli S.r.l. supplies all F1 teams and gets into U.S. motorsport, in Formula Indy.

2011

FORMULA NASCAR

Dino Paoli S.r.l. gets into Formula NASCAR with Red Devil.

2012

TSA

Torque and Angle Sensor System. Dino Paoli S.r.l. introduces an innovative technology that switches on a LED to signal the completed energy transfer and the correctly tightened wheel nut.

2014

DP 5000 TI MARK II

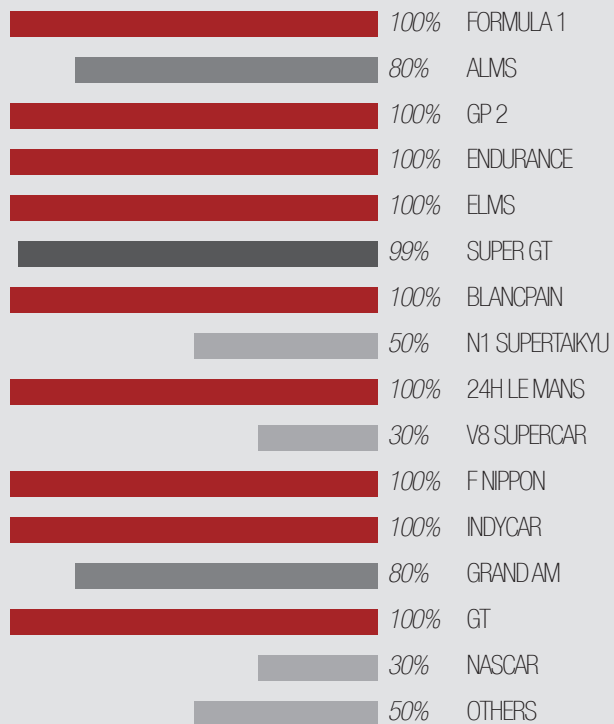
Dino Paoli S.r.l. starts manufacturing new wheel guns by using aerospace materials. Titanium and carbon are now used to produce the futuristic models DP5000-Ti-Mark II.

2016

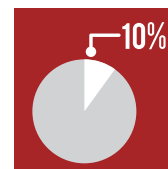
DP 6000

Dino Paoli S.r.l. introduces the innovative 90° ergonomics handle and produces the DP 6000.

DEVELOPMENT



110.000 IMPACT WRENCHES
PRODUCED SINCE 1969



10% OF TURNOVER
REINVESTED IN TECHNOLOGY



100% FORMULA 1 TEAMS
USE PAOLI GUNS



40 YEARS OLD PAOLI
EMPLOYEES' AVERAGE AGE



700 ACTIVE RESELLERS
IN THE WORLD



5000 H PAOLI STAFF'S HOURS
OF PERSONAL TRAINING



RED DEVIL 2.0

**BEST
PRACTICE**

NASCAR

- IMPROVED ERGONOMICS
- BUILT-IN OILER
- INCREASED PERFORMANCE
- INNOVATIVE AND PERFORMING MATERIALS
- BUILT-IN **CLUTCH DEVICE** TO REDUCE TIGHTENING TORQUE
- SOCKET INCLUDED
- SEVERAL SOCKET LENGTHS AVAILABLE
- WHIP HOSE INCLUDED



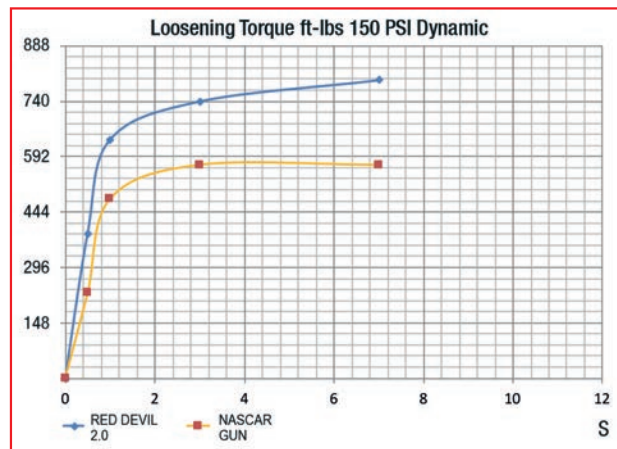
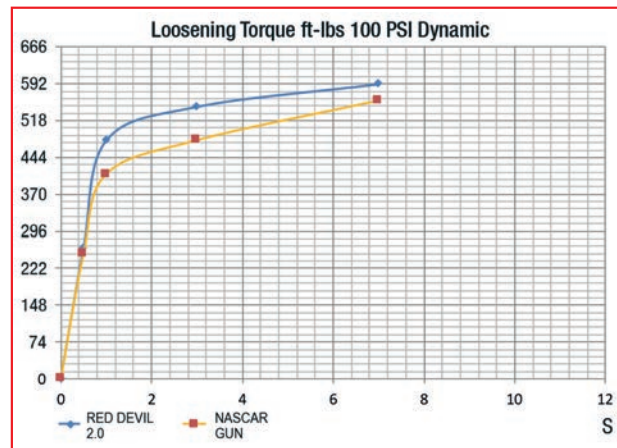
FREE SPEED 14500 rpm
MAX TORQUE 1100 Nm (812 ft-lbs)



Product name	RED DEVIL 2.0
Product code	RDEVIL.00022
Square drive	1/2"
Weight	5.2 lbs
Length	7.75"
Air inlet	A-A 59439* / ISO 6150 B
Supply hose inside diameter	0.39"
Max pressure	175 psi
Free Speed (175 psi)	14500 rpm
Max torque	1100 Nm (812 ft-lbs)
Gun selector plate	3 port

* Former U.S. Standard MIL C 4109 3/8"

Options available on demand: carbon fiber nose cone.



RECCOMENDED ACCESSORIES

SOCKETS AND SPRINGS

Here you can find our recommended accessories that allow you to get the best performances from your Red Devil 2.0 wheel guns.
These accessories have been selected by the best Nascar tire-chargers just for you.



B.28.0021



B.28.0014



B.28.0047



B.28.0048



B.23.0077

CODE	DESCRIPTION
B.28.0021	Competitor gun socket. Not for use with Red Devil.
B.28.0014	Red Devil socket. To be used with Red Devil 2.0.
B.28.0018	Deeper pockets socket. To be used with Red Devil 2.0.
B.28.0048	Red Devil socket. To be used with Red Devil 2.0.
B.28.0047	Red Devil socket. To be used with Red Devil 2.0.
B.28.0077	Softer spring. Option.

AIR SUPPLY SYSTEM

QUICK RELEASE COUPLINGS



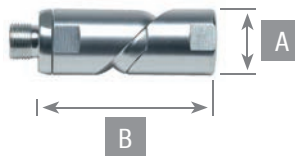
1



2

	PRODUCT CODE	TYPE OF CONNECTION
1	B.42.0021	Female quick disconnect coupling
2	B.42.0022	Male quick disconnect coupling

TURNING CONNECTORS



PRODUCT CODE	MALE/FEMALE	INNER DIAMETER	A	B
B.43.0004	1/4" NPT	0,43"	1,16"	3,23"
B.43.0005	3/8" NPT	0,275"	0,94"	2,63"



AIR SUPPLY SYSTEM

AIR BOTTLE COMPRESSOR



DPH380

PRODUCT CODE	B.21.0138
PRODUCT NAME	DPH380
ENGINE	Three-phase Electric 5,5kW - 7,5HP 230 V - 60 Hz
CAPACITY	10,6 cfm
OPERATING PRESSURE	300 bar 4350 psi
FILLING TIME	6' 44" (air bottle 2.64 US gal - 0-2900 psi)
NOISE LEVEL	78 dB
OVERALL DIMENSIONS	118x54x69 cm 46.46 x 21.26 x 27.16"
DRY WEIGHT	137 kg - 302 lb

ALSO AVAILABLE:

B.21.0139 Engine 400 V - 60 Hz
B.21.0140 Engine 440 V - 60 Hz

AIR PRESSURE REGULATOR F15

DIAPHRAGM TYPE



CODE	B.40.0048
INLET PRESSURE	4350 psi
MAX FLOW (20 BAR/OUT)	294.3 cfm
GAUGES IN	0-4000 psi
GAUGES OUT	0-400 psi
OVER PRESSURE VALVE SETTING	217 psi
THREAD OUT	1/2" BSPT
FLOW	high
AIRJACK	
HIGH FLOW FILTER	
BALANCED	

AIR PRESSURE REGULATOR F4

PISTON TYPE



CODE	B.40.0030	B.40.0042
INLET PRESSURE	3190 psi	5075 psi
MAX FLOW (290 PSI/OUT)	235.4 cfm	294.3 cfm
GAUGES IN	0-4000 psi	0-630 bar
GAUGES OUT	0-1000 psi	0-100 bar
OVER PRESSURE VALVE SETTING	725 psi	725 psi
THREAD OUT	3/8" BSP	3/8" BSP
FLOW	high	high
AIRJACK	•	•
HIGH FLOW FILTER	•	•
BALANCED	•	•

AIR SUPPLY SYSTEM

COMPRESSORS FITTINGS



B.21.0007



B.21.0028



B.21.0065



B.21.0064



B.21.0044



STANDARD - B.21.0024

PRODUCT CODE	DESCRIPTION	
B.21.0007	DIN 230	DIN 230 bar
B.21.0024	DIN 300	DIN 300 bar
B.21.0044	ITALIAN CONNECTOR	ATTACCO ITALIA
B.21.0066	INT YOKE	INT YOKE
B.21.0067	DIN/INT REDUCER	RIDUTTORE DIN/INT
B.21.0014	BC DIN 230	BC DIN 230 bar
B.21.0028	BC ITALIAN CONNECTOR	BC ATTACCO ITALIA
B.21.0065	BC INT	BC INT
B.21.0064	BC DIN 300 USA	BC DIN 300 bar USA
B.21.0025	BC DIN 300	BC DIN 300 bar

HOSES



B.20.01.0008



B.20.01.0004



B.41.0009

DESCRIPTION	INNER DIAMETER	EXTERNAL DIAMETER	LENGHT
B.41.0009			
Hoses	0,375"	0,59"	328 ft
B.20.01.0004			
Hose with fittings	0,375"	0,59"	50 ft
B.20.01.0008			
Whip hose	0,375"	0,59"	2 ft

PIT EQUIPMENT

FLIGHT CASES



B.48.0001

PRODUCT CODE	DIMENSION	WEIGHT	DESCRIPTION
B.48.0001	38.98 x 29.92 x 35.04"	217.1 lbs	for tools, accessories and pit equipment
B.48.0003	34.65 x 21.26 x 27.56"	71.65 lbs	for Paoli compressors DPH380

Customizations available:

- Overall dimensions
- Drawers configuration
- Logo engraving
- Many finishes of color available (embossed, quartz and smooth)
- Many colors available



B.48.0003

PIT EQUIPMENT

COVERS

TRANSPARENT
PLASTIC COVER



BLACK
RUBBER COVER



BALLISTIC
NYLON COVERS



Technical fabric cover made of ballistic nylon.

- Strong and durable
- Thick and resistant
- New design
- Available in:



blue



red



black

AVAILABLE FOR	DESCRIPTION	PRODUCT CODE
RED DEVIL 2.0	Transparent plastic cover Thickness 0.08"	B.18.0019
RED DEVIL 2.0	Black Rubber cover Thickness 0.16"	B.18.0020

AVAILABLE FOR	DESCRIPTION	PRODUCT CODE
RED DEVIL 2.0	Black cover	B.18.0034
RED DEVIL 2.0	Red cover	B.18.0035
RED DEVIL 2.0	Blue cover	B.18.0036

PIT EQUIPMENT

WHEEL GUN BAGS



B.19.0007 RED



B.19.0008 BLUE



B.19.0006 BLACK



B.19.0005 BLACK
with customizable logo

Made of technical fabric with polyethylene foam padding. Removable padding.
Hand wash with soap and water (not washing machine).

- More colors available
- New design
- Tags available

GRIP TAPES



B.23.0076



B.22.0030

PRODUCT CODE	DESCRIPTION
B.22.0030	Handle sticker for RED DEVIL 2.0
B.23.0076	Grip Tape (32.8 ft x 1.97")

WHEEL GUN LUBRICANTS



B.27.0007



B.27.0004



B.27.0005



B.27.0016

PRODUCT NAME	PRODUCT CODE	QUANTITY	DESCRIPTION
CGRM	B.27.0007	2.2 lbs	Special Grease for PAOLI wheel gun hammer mechanism.
COL1	B.27.0004	0,26 US gal	Special Oil for PAOLI wheel gun motors.
COL5	B.27.0005	1.32 US gal	Special Oil for PAOLI wheel gun motors.
	B.27.0016	0.13 US gal	Special spray Lubricant for PAOLI wheel gun motors

PIT EQUIPMENT

PAOLI PIT STOP HELMETS

- Shell in HTR (High Thermoplastic Resin)
- Ultra-resistant painting
- INNER LINING removable and washable
- MICROMETRIC BUCKLE
- GOGGLE STRAP HOLDER on the back, to keep the strap of the goggle in place
- DAF VENTILATION system (Direct Air Flux) easy system of regulating the temperature inside the helmet
- NEW MIRROR VISOR ANTI-FOG and ANTI-SCRATCH:
equipped with a rubber trim that run along the visor offering additional comfort and protection to the face of use.

FOR PIT STOP USE ONLY!

B.38.04.01.0004 CHIN GUARDS
Polyurethane Chin guards to protect from the cold and small bumps. Black.



PRODUCT NAME	PRODUCT CODE	SIZE	COLOR
PIT STOP HELMET	B.38.04.01.0001	MEDIUM / 58	BLACK MATTE HELMET - MIRROR VISOR
PIT STOP HELMET	B.38.04.01.0002	LARGE / 60	BLACK MATTE HELMET - MIRROR VISOR
PIT STOP HELMET	B.38.04.01.0003	X-LARGE / 61	BLACK MATTE HELMET - MIRROR VISOR
CHIN GUARDS	B.38.04.01.0004	ONE SIZE	BLACK

PIT EQUIPMENT

GLOVES



PRODUCT NAME	PRODUCT CODE	SIZE	COLOURS	NOTE
FAST FIT®	B.38.01.01.0001	S	black	Easy On/Off Fit Glove - With improved contours for a better fit, the Fast Fit® Glove is the tool to use for everyday jobs. The glove incorporates a Clarino Synthetic Leather palm, stretch panels between the fingers, two-way stretch Spandex padded back increases protection. A new taller cuff has been added to provide for additional protection and a more secure fit. Performance plus economy. Machine washable.
	B.38.01.01.0002	M		
	B.38.01.01.0003	L		
	B.38.01.01.0004	XL		
M-PACT® 2	B.38.01.01.0025	S	black	Heavy Duty Glove - For super protection and an unbelievable fit, try the M-Pact® 2 Glove. Anatomically designed with advanced features that include tapered stretch side panels that form comfortably between fingers and a molded Neoprene cuff for a seamless fit to your wrist. It also has an integrating impact absorbing molded rubber finger protection and EVA deep ribbed accordion knuckle protection. This glove has it all. Machine washable.
	B.38.01.01.0026	M		
	B.38.01.01.0027	L		
	B.38.01.01.0028	XL		
ORIGINAL® GLOVE	B.38.01.01.0005	S	black	All-Purpose Glove - Designed and manufactured to take on the toughest tasks you can throw at it, the Original® Glove provides a winning combination of versatility and performance. The Clarino Synthetic Leather palm and fingertips extends the life of the glove while the Thermal Plastic Rubber hook and loop cuff closure and two-way stretch Spandex top provides a perfect fit. Machine washable.
	B.38.01.01.0006	M		
	B.38.01.01.0007	L		
	B.38.01.01.0008	XL		
	B.38.01.01.0009	S	red	
	B.38.01.01.0010	M		
	B.38.01.01.0011	L		
	B.38.01.01.0012	XL		
	B.38.01.01.0013	S	blue	
	B.38.01.01.0014	M		
B.38.01.01.0015	L			
B.38.01.01.0016	XL			
ORIGINAL® VENT	B.38.01.01.0017	S	white	Fully Ventilated Glove - Improved design. Designed for hot or humid conditions, the Original® Vent Glove gives you a single-layer of lightweight air mesh on the top to minimize heat build-up while it's perforated Clarino Synthetic Leather palm and fully ventilated construction keeps the entire hand comfortable and cool. A new taller cuff with an improved rubber closure system gives you the confidence you need when the heat is on. Machine washable.
	B.38.01.01.0018	M		
	B.38.01.01.0019	L		
	B.38.01.01.0020	XL		
	B.38.01.01.0021	S	black	
	B.38.01.01.0022	M		
	B.38.01.01.0023	L		
	B.38.01.01.0024	XL		



FAST FIT®



M-PACT® 2



ORIGINAL® GLOVE



ORIGINAL® VENT

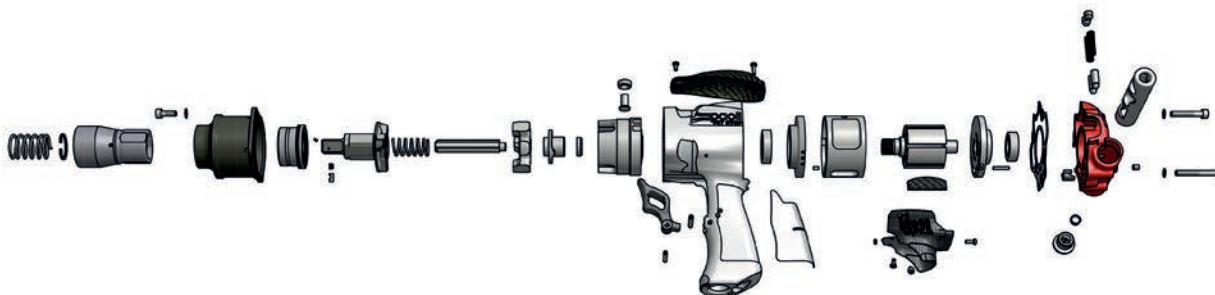
PRODUCT CARE

RED DEVIL 2.0 SERVICE

	SERVICE, REPAIR	SERVICE, REPAIR, REPAINT	TEST
RED DEVIL 2.0	R.05.01.01.0051	R.05.01.01.0052	R.05.01.01.0001
CHECK Check of the table "Request for Service & Maintenance" that is filled in to the customer.	✓	✓	
DISASSEMBLING The wheel gun is completely disassembled.	✓	✓	
EXAMINE Check of each part for conformity.	✓	✓	
CLEANING Each part is cleaned and the grease is taken off.	✓	✓	
REPLACEMENT Replacement consumables parts (service kit: vanes, screws, washers, valve seat).	✓	✓	
DE-PAINTING The alloy parts are de-painted. The clutch cover is re-coated.		✓	
RE-ASSEMBLING The wheel gun is re-assembled.	✓	✓	
TEST The wheel gun is tested.	✓	✓	
RE-PAINTING The wheel gun is prepared for the re-painting and then properly re-painted.		✓	
CERTIFICATE This document certifies the parts that have been replaced and the tightening torque the gun reaches after the service.			✓
MAGNETOSCOPIC INSPECTION The method is designed for the inspection of small parts through fluorescent magnetoscopic inspection.			✓

SERVICE KIT FOR RED DEVIL 2.0: CODE B.23.0145

WHEEL GUNS SPARE PARTS



ACCESSORIES SERVICE & REPAIR



www.paoli.net/productcare



Dino Paoli S.r.l.
Via G. Dorso, 5 - 42124 Reggio Emilia - Italy
Tel. +39 0522 364511 - Fax + 39 0522 304864
www.paoli.net - sales@paoli.net

MADE IN ITALY

