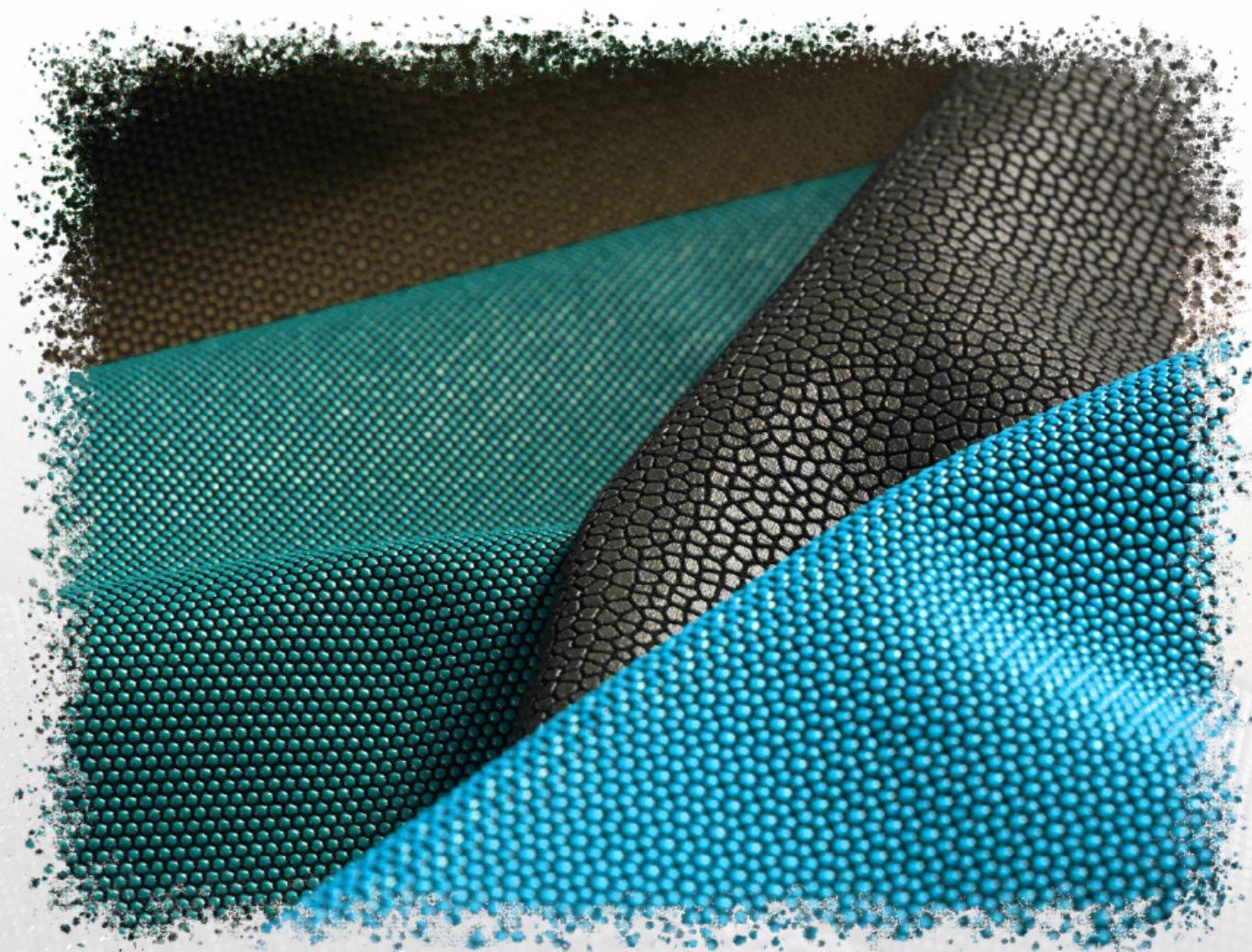




Unrivalled Performance. Unmatched Durability. Unlimited Possibilities.

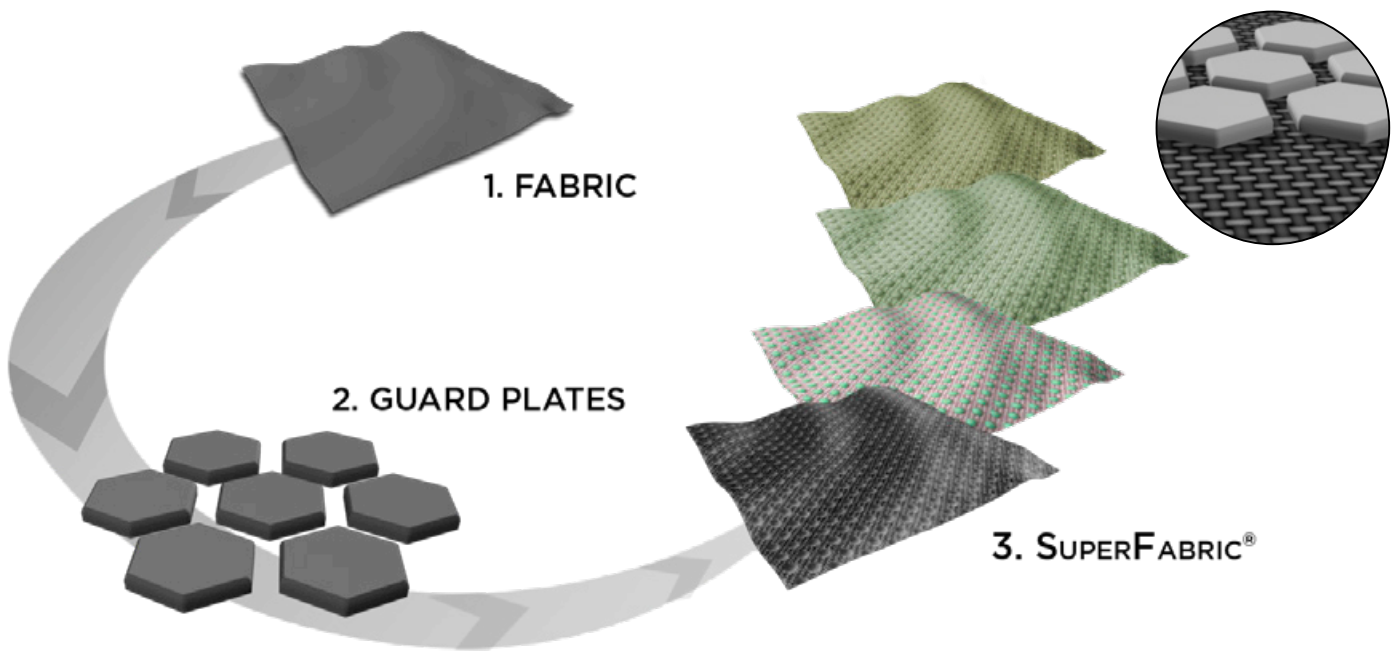
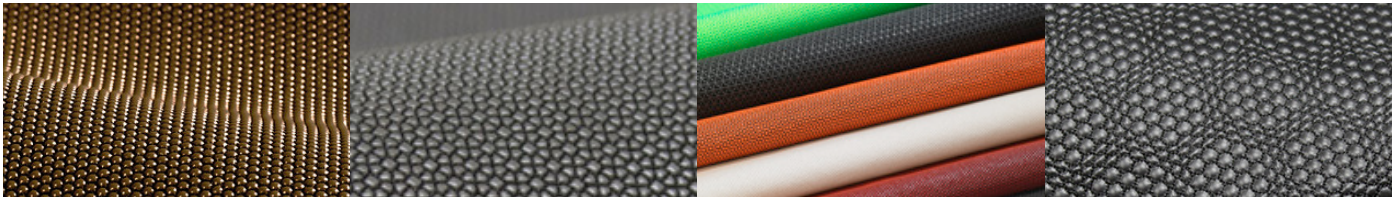
Information Guide



SuperFabric.com

Introduction to SuperFabric® Material

SuperFabric® technology starts with a fabric and overlays it with tiny plates (“guard plates”) in a specific arrangement. The gaps between guard plates allow complete flexibility. The geometry, thickness, and size of the guard plates, as well as the fabric, can be varied depending on the desired attributes. SuperFabric® materials are designed to deliver a range of performance features such as abrasion resistance, stain resistance, quick drying, weight reduction and more.



TECHNOLOGY

The key to this remarkable material is the fact that locally, the guard plates are hard. Globally, the plates allow full motion which gives SuperFabric® a feel similar to traditional fabrics.



Side View: Small guard plates allow a high degree of flexibility while providing superior protection



Side View: Shows integration of guard plates, spacing, and fabric

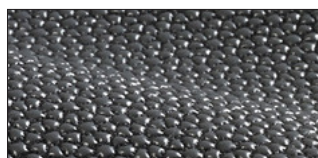
Types of SuperFabric® Material

We have created many types of SuperFabric® materials, all built around the same core technology. These materials are designed for a range of performance and attributes that helps showcase the versatility for which SuperFabric® is known.



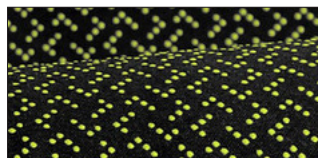
SUPERFABRIC®-Am99™

The newest addition to the SuperFabric® family of products. SuperFabric®-Am99™ incorporates antimicrobial functionality...more information on page 6.



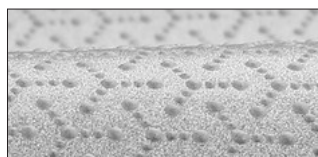
PERFORMANCE SUPERFABRIC®

These SuperFabric® materials have a close array of plating integrated into strong fabric to provide the most performance such as abrasion resistance, slash resistance and more.



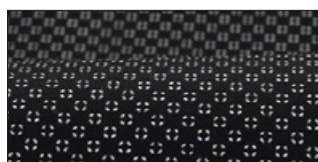
LIGHTWEIGHT SUPERFABRIC®

These SuperFabric® materials are very lightweight while still bringing a level of performance that often surpasses other performance fabrics. These SuperFabric® materials offer soft hand feel and high levels of flexibility in addition to their lightweight properties.



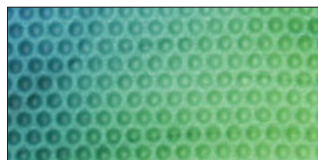
REFLECTIVE SUPERFABRIC®

Reflective SuperFabric® materials not only look good, but they are well suited for safety applications such as apparel, jackets, and shoes.



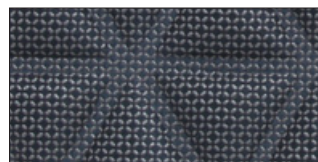
STRETCH SUPERFABRIC®

Many applications require fabric that has a bit of stretch, whether it be for apparel, bags, seating, or forming over hard objects such as cases. This offering still provides nice performance in a highly flexible fabric.



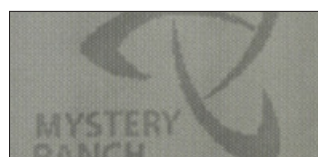
MULTI-COLORED SUPERFABRIC®

Multi-colored SuperFabric® ushers in a new era of continuous color. The coloring is a result of a deep infusion (sublimation) of color to the plates which results in strong, lasting color suited for many applications.



EMBOSSED SUPERFABRIC®

Specialized SuperFabric® brand materials with amazing design and performance. Can be used for many applications including seating, bags and apparel.



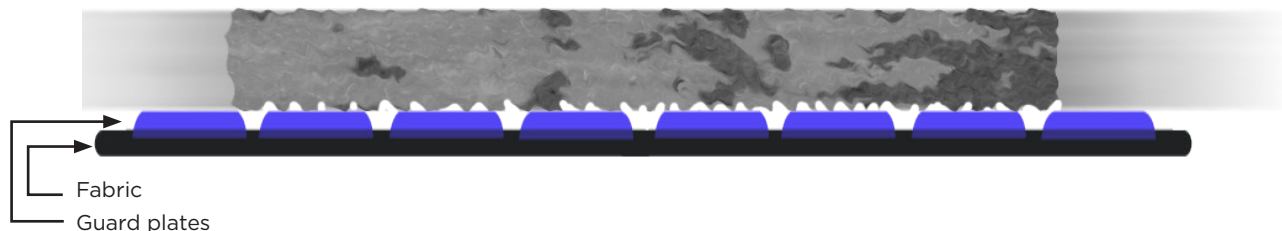
CUSTOM SUPERFABRIC®

Applications often require unique color, patterns, or branding to be most effective. SuperFabric® can provide all that and more. Customers love the flexibility and creativity of SuperFabric® material.

Benefits of SuperFabric® Material

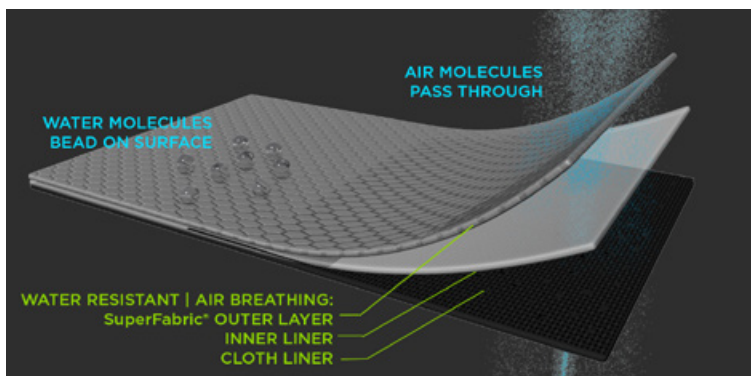
A BRASION RESISTANT

The guard plates are ready to fend off rock, ice, brush, debris, scuffs, and scrapes. The guard plates don't just look pretty, they perform day in and day out. SuperFabric® materials won't snag like knit fabrics. SuperFabric® is used in demanding applications such as motorcycle apparel, ski and snowboarding apparel, footwear, and more.



B REATHABLE AND WATER RESISTANT

Breathability: the ability of a fabric or material to transmit air and moisture. Lots of materials are, of course, breathable. However, being breathable while still being water resistant is a much taller order. By their inherent construction, many SuperFabric® materials are both air breathing and water repellent.



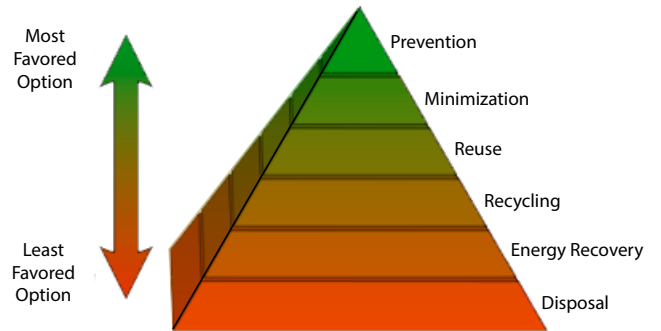
S TAIN RESISTANT

SuperFabric® is highly resistant to stains from mud, dirt, grease, and liquids such as oil, sauces, and more. This ALTAI™ boot, made with SuperFabric® material, resists mud and is easy to rinse clean with a garden hose or under a running faucet.



ENVIRONMENTALLY FRIENDLY MANUFACTURING

SuperFabric® offers a preventative solution, which represents the highest level of environmental protection. SuperFabric® durability extends finished goods' product life, thereby minimizing the need to produce and dispose of replacement products.



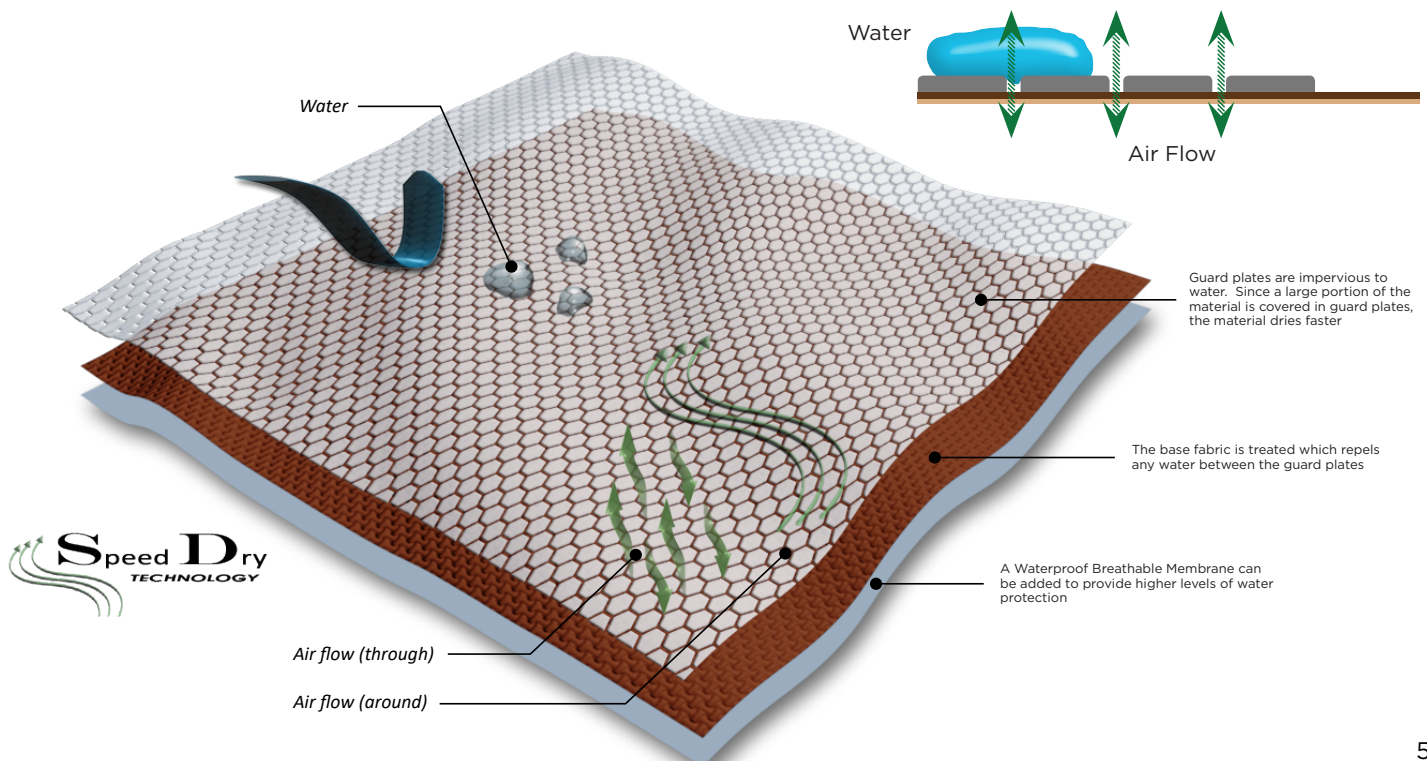
SLASH RESISTANT

The performance SuperFabric® materials with heavier coverage of guard plates offer the most protection against slashes. Many applications, such as motorcycle apparel, scuba apparel, ski and outdoor jackets and pants all benefit from the slash resistance SuperFabric® materials offer.



QUICK DRYING

SuperFabric® drying is the result of a 3-pronged system that quickly dries while keeping the elements on the outside and contents dry on the inside. Impervious guard plates, repellent fabric, and optional waterproof breathable membranes are part of the Speed Dry advantage.



SuperFabric® -Am99™

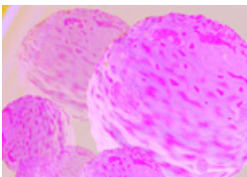


SuperFabric®-Am99™

SuperFabric® adds a **NEW** member to its portfolio of product offerings with the addition of its SuperFabric®-Am99™.

SuperFabric® materials are already known world-wide for their performance properties such as durability, stain resistance, breathability, quick drying, and more. SuperFabric® attains this remarkable combination of properties by having an array of closely spaced, engineered guard plates that creates a **LOCALLY HARD, GLOBALLY FLEXIBLE** fabric.

NOW, *SuperFabric®-Am99™, pushes the boundaries by adding antimicrobial functionality while still maintaining the other inherent features.



**Microbial Resistant
Odor-Resistant
Mold & Mildew Resistant**



**Durable
Stain Resistant
Quick Drying**

AND more!!!

The antimicrobial agent used in Am99™ kills and retards the growth of these types of microbes on SuperFabric®



bacteria



fungi



mold



mildew



algae

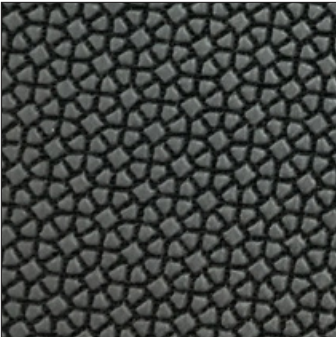
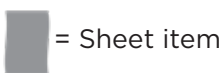
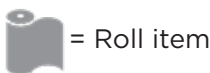
* Note that SuperFabric®-Am99™ contains antimicrobial agents intended to protect the product itself, by inhibiting the growth of microbes that may affect this product. The antimicrobial properties protect this product against bacteria, viruses, germs, or other disease organisms on SuperFabric®-Am99™.

This revolutionary textile contains one or more of silver zeolite (EPA Registration Number 40810-18) embedded into its guard plates, and/or Silane Quaternary Ammonium Compounds agents (EPA Registration Number 83019-1, EPA Registration Number 83019-2, EPA Registration Number 83019-3, EPA Registration Number 83019-4) that are either incorporated into the guard plates or chemically bound to the substrate fabric, resulting in a durable treatment that does not wash off under normal laundering conditions, does not leach and is highly resistant to being abraded off.

SuperFabric® Materials

In the following pages you will find a variety of SuperFabric® brand materials that address a range of performance and attribute needs. New SuperFabric® materials are constantly being developed, including ones with new patterns, colors, fabric, and more. For reference, please use the item number when requesting more information about a particular SuperFabric® brand material. Contact your SuperFabric® sales representative for information, to discuss custom options or request samples.

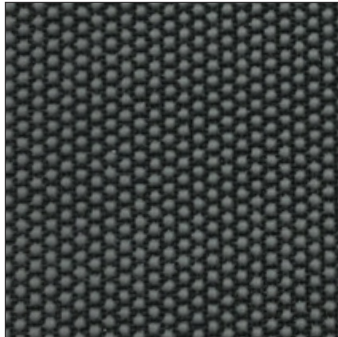
Item #, resin color, pattern, base fabric
Items are shown slightly enlarged



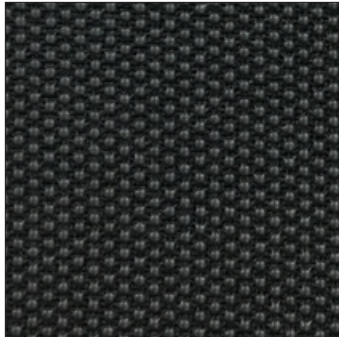
600100-960
Dolphin Gray
Penta 83/21-350
Black Poly 600D



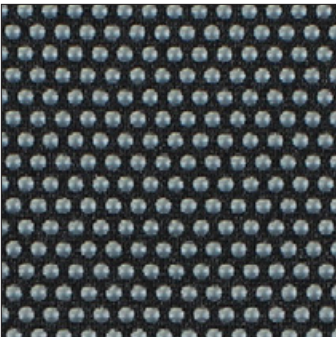
600100-962
Mystic Black
Penta 83/21-350
Black Poly 600D



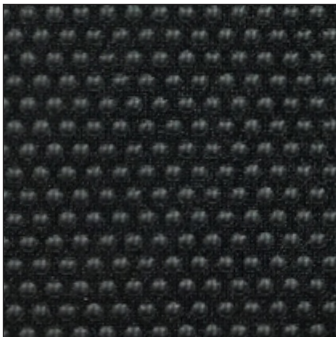
600107-900
Pewter Gray
Hex 60/18-300
Black Poly 600D



600107-905
Dusky Black
Hex 60/18-300
Black Poly 600D



600120-900
Pewter Gray
Dot 80/40-300
Stretch Nylon/Spandex



600120-905
Dusky Black
Dot 80/40-300
Stretch Nylon/Spandex



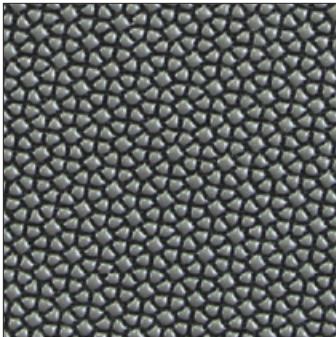
600135-900
Pewter Gray
XGP 60/30
Black Poly 100D



600135-905
Dusky Black
XGP 60/30
Black Poly 100D



600147-780
Nutmeg
Hex 80/18
Brown Poly 600D



600195-960
Dolphin Gray
Mini Penta
Black Poly 600D



600195-962
Mystic Black
Mini Penta
Black Poly 600D

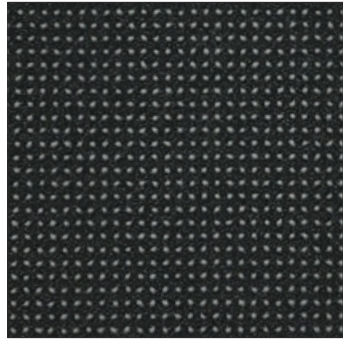


600200-900
Pewter Gray
Dot 80/40-300
Black Poly 600D





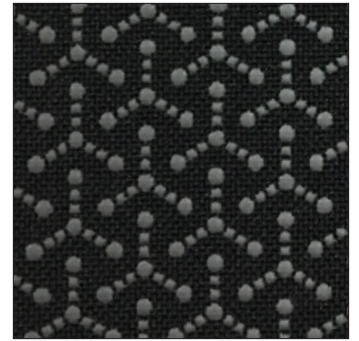
600200-905
Dusky Black
Dot 80/40-300
Black Poly 600D



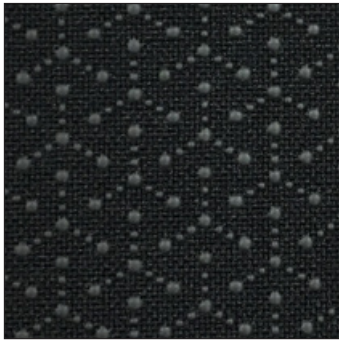
600256-900
Pewter Gray
XGP Small
Black Poly 100D



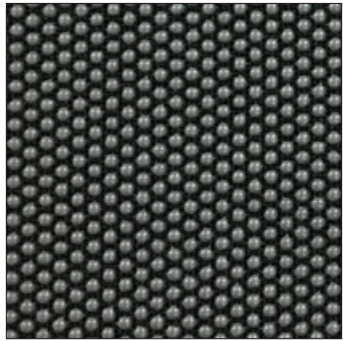
600256-905
Dusky Black
XGP Small
Black Poly 100D



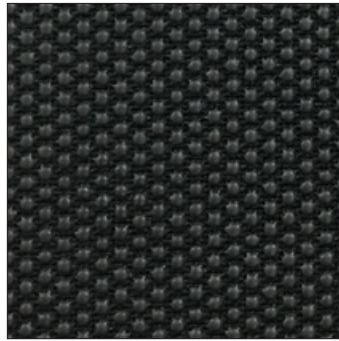
600815-900
Pewter Gray
Jax
Black Poly 600D



600815-905
Dusky Black
Jax
Black Poly 600D



601050-620
Stormcloud Gray
Hex 80/18
Black Poly 600D



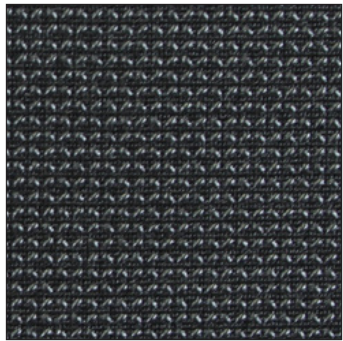
601050-905
Dusky Black
Hex 80/18
Black Poly 600D



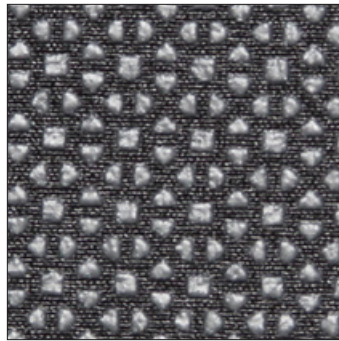
601070-925
Sandstone Tan
Hex 80/18
Tan Poly 600D



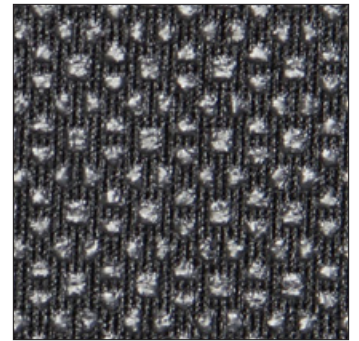
700105-900
Pewter Gray
XGP 60/30
Stretch Nylon/Spandex



700105-905
Dusky Black
XGP 60/30
Stretch Nylon/Spandex



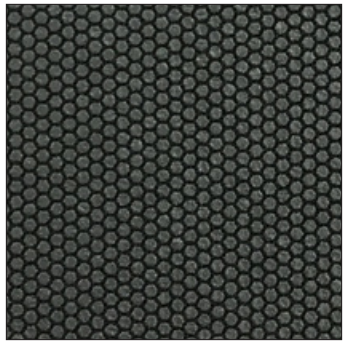
700108-960
Dolphin Gray
80/28-400 Penta
Stretch Nylon/Spandex



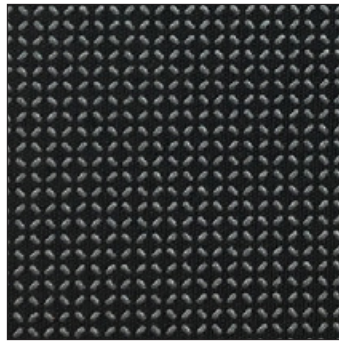
700108-962
Mystic Black
80/28-400 Penta
Stretch Nylon/Spandex



700149-700
Raven Black
Hex 60/10-200
Black Poly 100D



700149-800
Charcoal Gray
Hex 60/10-200
Black Poly 100D



700180-900
Pewter Gray
XGP 60/30
Black JT Stretch 3-Layer

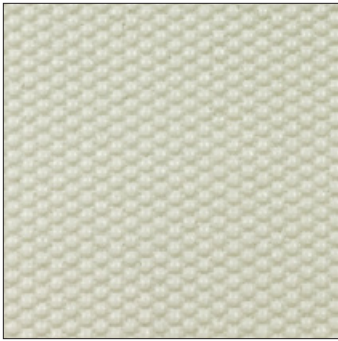


700180-905
Dusky Black
XGP 60/30
Black JT Stretch 3-Layer

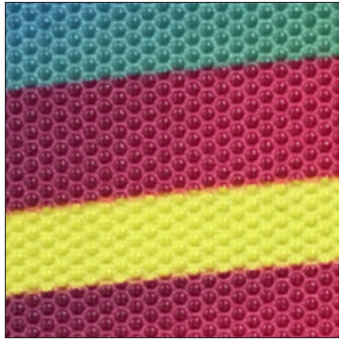




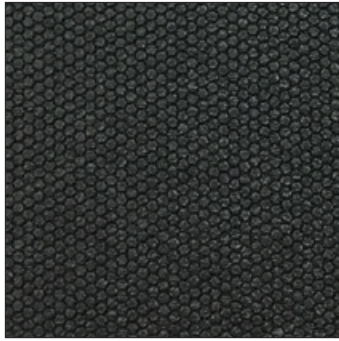
700192-638
 Coyote Brown
 Hex 80/14-400
 Coyote Poly 600D



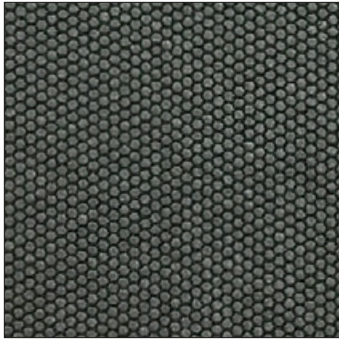
700300-722
 Eggshell White
 Hex 70/08-400
 White Poly 600D



700305-722
 Multi-color Example
 Hex 70/08-400
 White Poly 600D



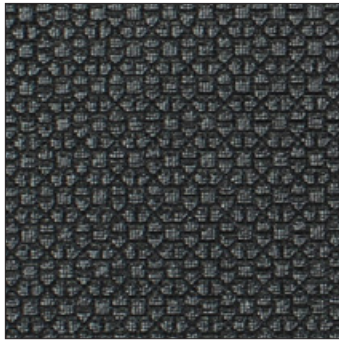
700538-700
 Raven Black
 Hex 50/05-200
 Black Poly 100D



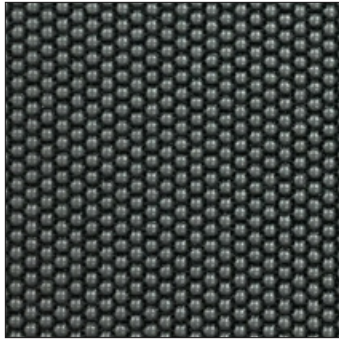
700538-800
 Charcoal Gray
 Hex 50/05-200
 Black Poly 100D



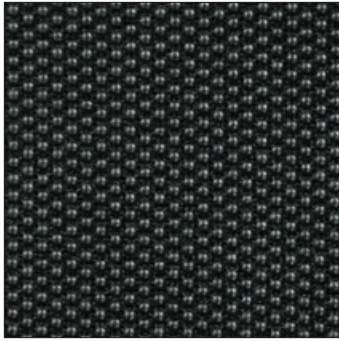
700554-700
 Raven Black
 Hex 50/05-200
 Black Poly 100D+Silicone



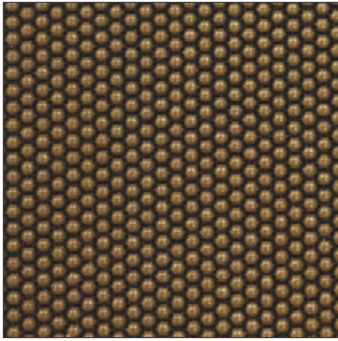
700590-701
 Rough Black
 Penta 83/11-400
 Black Poly 600D



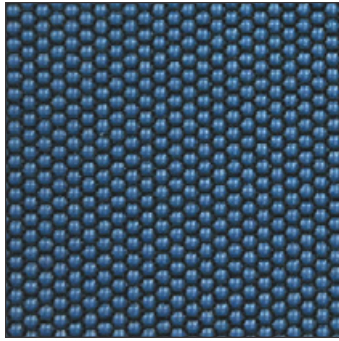
700665-620
 Stormcloud Gray
 Hex 70/08-400
 Black Poly 600D



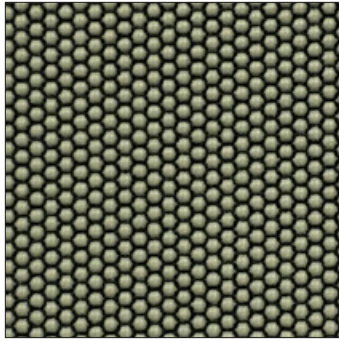
700665-720
 Onyx Black
 Hex 70/08-400
 Black Poly 600D



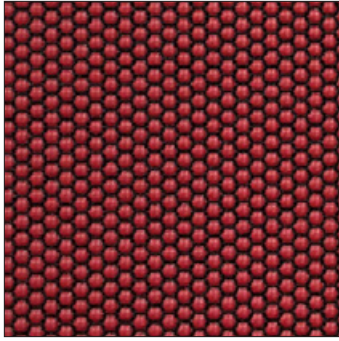
700665-780
 Nutmeg
 Hex 70/08-400
 Black Poly 600D



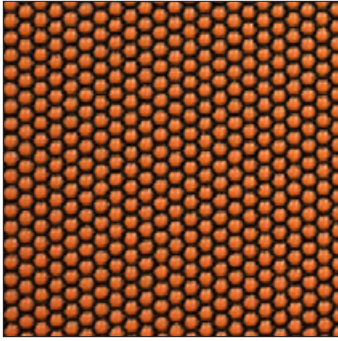
700665-910
 Slate Blue
 Hex 70/08-400
 Black Poly 600D



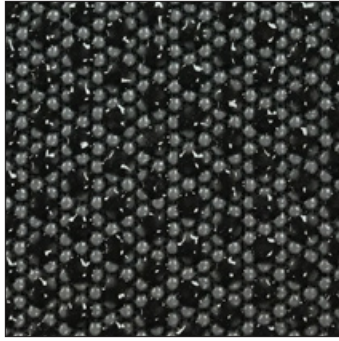
700665-920
 Mushroom
 Hex 70/08-400
 Black Poly 600D



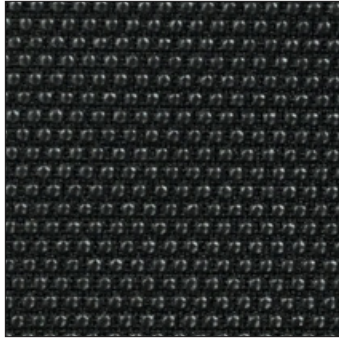
700665-930
 Red Wine
 Hex 70/08-400
 Black Poly 600D



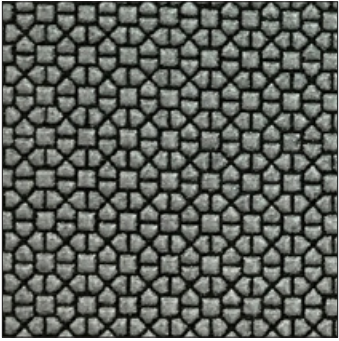
700665-953
 Pumpkin
 Hex 70/08-400
 Black Poly 600D



700670-620
 Stormcloud Gray
 Hex 70/08-400
 Black Poly 600D+Silicone



700690-720
 Onyx Black
 Hex 80/14-400
 Black Poly 600D



700810-935
Silver
Penta 83/11-400
Black Poly 600D



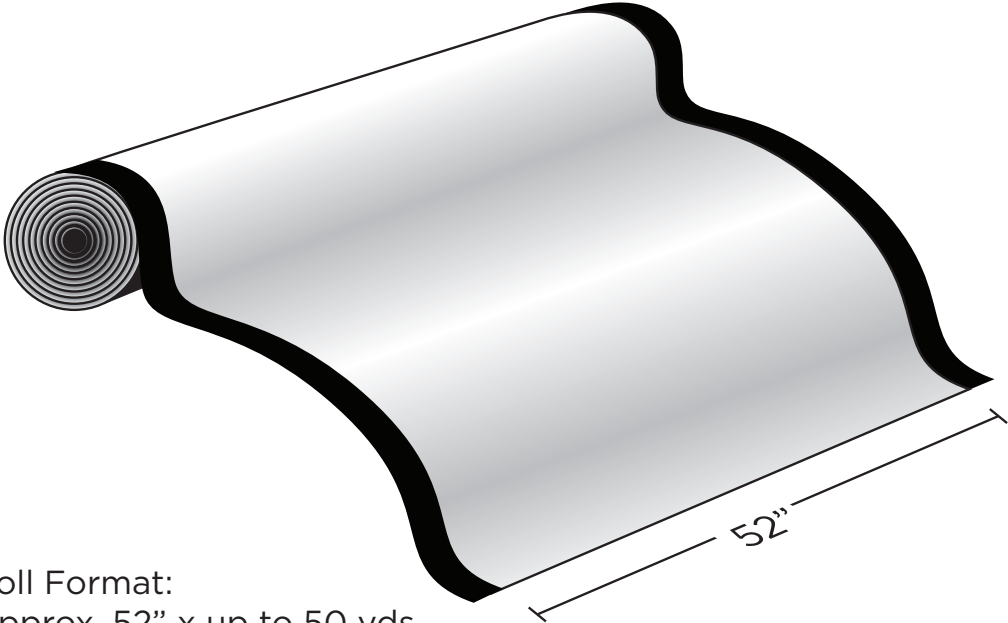
701020-900
Pewter Gray
Hex 60/10-200
Black Poly 600D



701020-905
Dusky Black
Hex 60/10-200
Black Poly 600D

SuperFabric® material Formats:

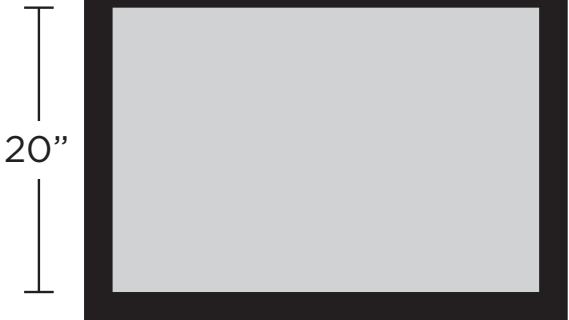
SuperFabric® materials are available in rolls or sheets. Item numbers that begin with 6 are roll items. Item numbers that begin with 7 are sheet items. The measurements indicate the actual areas of printed guard plates, not the sizes of the fabric they are printed on. Black edges indicate approximate areas of unprinted fabric.



Roll Format:
Approx. 52" x up to 50 yds.
(132.08 cm x 45.72 m)



Sheet Format:
Approx. 20" x 30"
(50.8 cm x 76.2 cm)



*Semi-matte finish
 **Semi-gloss finish
 ***Matte finish



GUARD PLATE COLORS

			
700 RAVEN BLACK* PANTONE 426C	720 ONYX BLACK** PANTONE 426C	905 DUSKY BLACK* PANTONE 447C	962 MYSTIC BLACK* PANTONE BLACK C
			
620 STORMCLOUD GRAY** PANTONE 425C	800 CHARCOAL GRAY** PANTONE 446C	900 PEWTER GRAY*** PANTONE 425C	960 DOLPHIN GRAY** PANTONE 425C
			
920 MUSHROOM PANTONE 403C	930 RED WINE PANTONE 201C	953 PUMPKIN ORANGE PANTONE 1595C	780 NUTMEG BROWN PANTONE 463C
			
910 SLATE BLUE PANTONE 7462C	935 SILVER PANTONE 877C	638 COYOTE BROWN PANTONE 4485C	925 SANDSTONE TAN PANTONE 7529C
			
722 EGGSHELL WHITE PANTONE COOL GRAY 1C	812 OLIVE GREEN† PANTONE 5753C	774 BONE WHITE† PANTONE 7541C	027 MINT† PANTONE 344C
			
036 SKY BLUE† PANTONE 7542C	968 MULTI-CAM (FR)‡ PANTONE 7497C	016 FR BLACK‡ PANTONE BLACK C	033 MULBERRY† PANTONE 5125C
			
950 TURKISH COFFEE PANTONE 440C	089 HI-VIS YELLOW PANTONE 388C		

Colors shown are an approximation to actual color. Perceived color will depend on many factors including lighting, base fabric color, pattern, etc.

†Available as special order only.



‡Fire-resistant guard plates. Available as special order only.

BASE FABRIC COLORS

600D POLYESTER

	
BLACK	GRAY
	
COYOTE	BROWN
	
WHITE	GREEN

100D POLYESTER

	
BLACK	COYOTE

STRETCH NYLON/ SPANDEX



BLACK

3-LAYER WATERPROOF POLYESTER



BLACK

NEOPRENE 1MM



BLACK

600D POLYESTER WITH P/U BACKING



BLACK

Pricing and lead times will vary. Specific resins may not be available for all items. Contact your SuperFabric® Account Manager for more details.

Submission of Purchase Order acknowledges that the Standard Terms & Conditions have been read and accepted. SuperFabric® prices, lead times, and availability are subject to change.



Facebook.com/SuperFabric



Twitter.com/SuperFabric



Linkedin.com/company/SuperFabric



Instagram.com/SuperFabric_official



YouTube.com/SuperFabricNews



SuperFabric.com

This information guide was developed to show some of the properties and attributes of SuperFabric® materials. There may be variations from lot to lot and sample quantity to production. Such variations include, but are not limited to, color, performance, and feel of the guard plates, as well as fabric variations. Pricing, performance, and availability are subject to change.

SuperFabric® materials are not puncture, abrasion, or cut proof, etc. SuperFabric® materials are available in a variety of configurations and intended to be matched with suitable applications. Branding agreement is needed for the use of SuperFabric® materials.

©Higher Dimension Materials, Inc. 2019

Higher Dimension Materials, Inc. is the owner of all copyrights in the text, graphics, and fabric designs shown in this information guide. For more information please visit our website.

SuperFabric® is a registered trademark of Higher Dimension Materials, Inc. in the United States.

Pat. 5906873, other patents pending.

HDM, Inc. USA

570 Hale Ave N
Oakdale, MN USA 55128
+001 651-730-6203
findoutmore@superfabric.com

HDM, Inc. KOREA

NO. 202, 94-7, Sinseol-dong,
Dongdaemun-Gu,
Seoul 02586 South Korea
Phone: 82-(0)70-7099-9596

HDM, Inc. SINGAPORE

35 Tampines Street 92 #02-00
Singapore 528880
Phone: 65.6844.4012



SuperFabric.com

©Copyright HDM, Inc. 2019